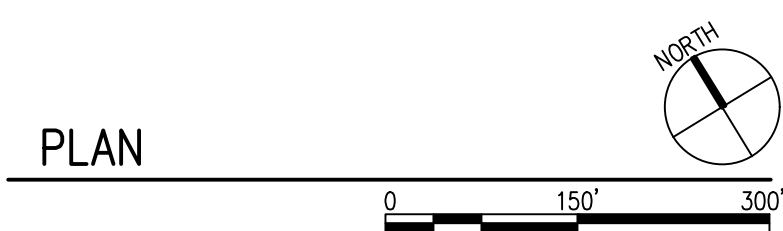
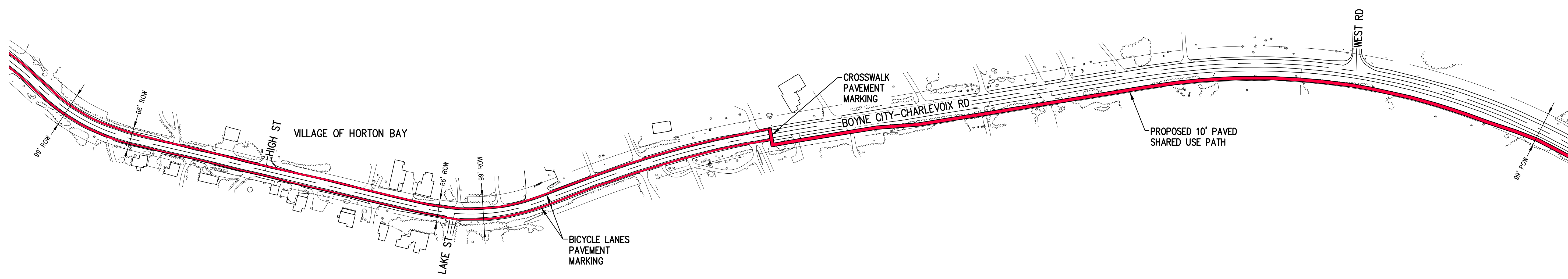
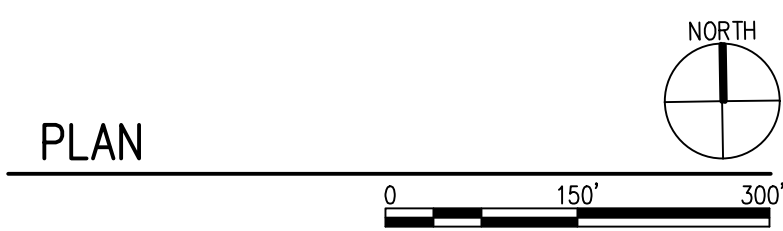


CHARLEVOIX COUNTY ROAD COMMISSION HAS GIVEN PERMISSION FOR CONSTRUCTION OF TRAILWAY WITH IN THE PORTION OF THE 66'-99' WIDE HIGHWAY RIGHT-OF-WAY INDICATED ON THE MAP



**BOYNE CITY - CHARLEVOIX ROAD SHARED USE PATH**  
 CHARLEVOIX COUNTY, MICHIGAN

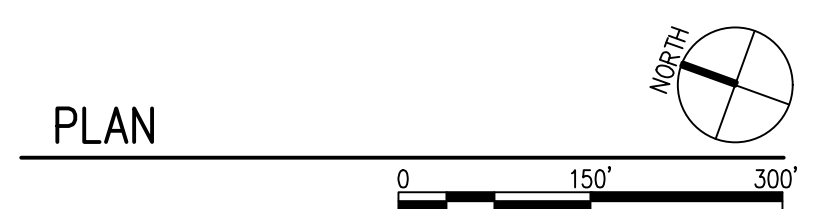
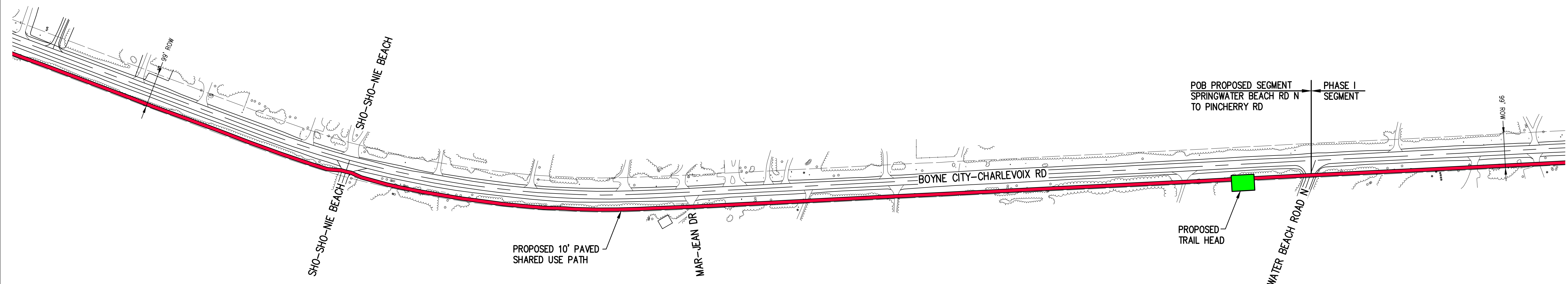
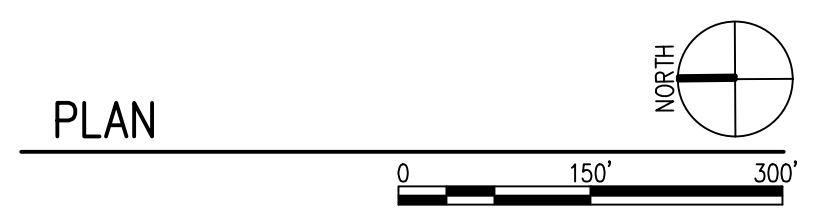
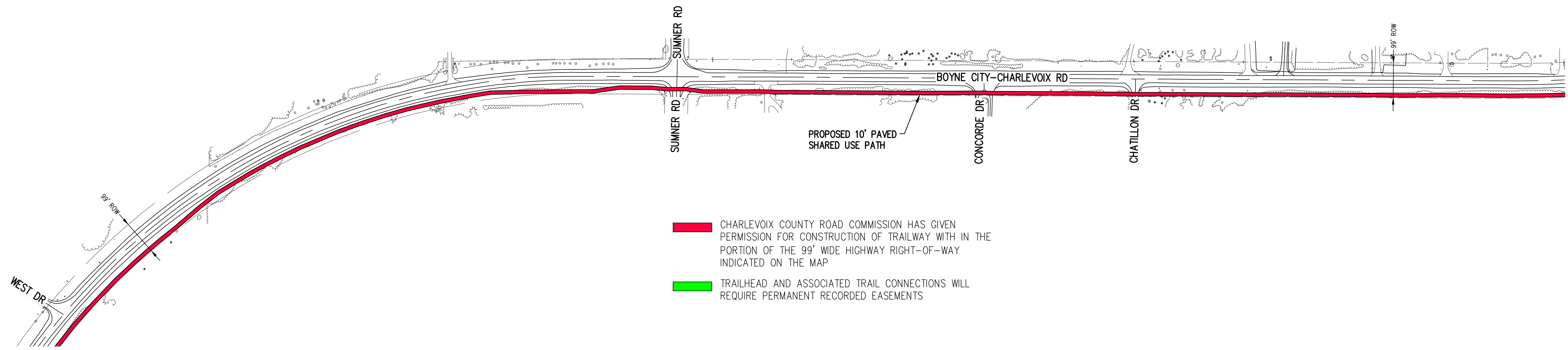
PREPARED FOR: CHARLEVOIX COUNTY

MARK	03.29.17	GRANT APPS
DATE		ISSUED FOR
PROJECT NO	1041012	
CADD FILE	BC-CVX PATH PH III PL1 DESL PLN	
DESIGNED BY	DSB	
DRAWN BY	MAS	
CHECKED BY	DSB	
© NORTHWEST DESIGN GROUP, INC. 2017		
SHEET TITLE		

PLAN

G-101

\\ndg\c\land\Projects\Land Projects\2017\1041012 Char-Boyne Path\Sheets\PH III PLAN\NEWS-BC-CVX PATH PH III PL1 DESL PLN.dwg



**BOYNE CITY – CHARLEVOIX ROAD SHARED USE PATH**  
 CHARLEVOIX COUNTY, MICHIGAN

PREPARED FOR: CHARLEVOIX COUNTY

MARK	03.29.17	GRANT APPS
DATE		ISSUED FOR
PROJECT NO	1041012	
CADD FILE	BC-CVX PATH PH III PL2 DSWL PLN	
DESIGNED BY	DSB	
DRAWN BY	MAS	
CHECKED BY	DSB	
© NORTHWEST DESIGN GROUP, INC 2017		
SHEET TITLE		

PLAN

G-102

\\ndgpc\LeadProjects\Land Projects R2\1041012 Chr-Boyne Path\Sheets\PH III PLAN NEWS\BC-CVX PATH PH III PL2 DSWL PLN.dwg